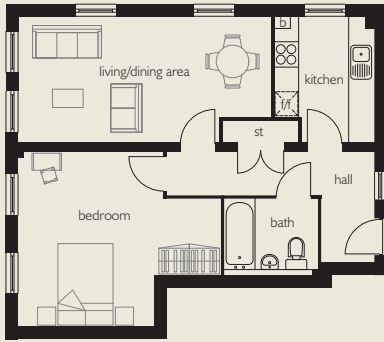


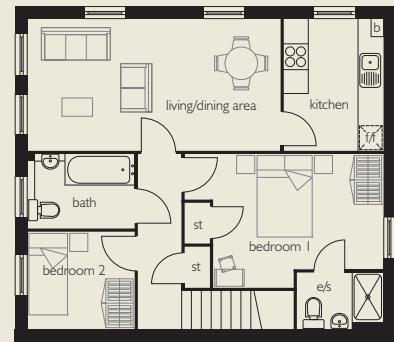
The A1

1 & 2 bedroom apartments
PLOTS 60 & 61



GROUND FLOOR - PLOT 60

Kitchen	3.044m x 2.425m	9'12" x 7'11"
Living/Dining Area	6.146m x 3.044m	20'2" x 9'12"
Bedroom	4.936m x 4.238m	16'2" x 13'11"

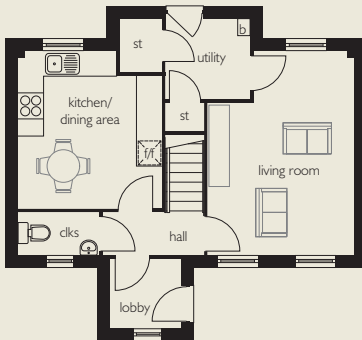


FIRST FLOOR - PLOT 61

Kitchen	3.208m x 2.421m	10'6" x 7'11"
Living/Dining Area	6.162m x 3.208m	20'3" x 10'6"
Bedroom 1	4.646m x 3.262m	15'3" x 10'8"
Bedroom 2	2.600m x 2.352m	8'6" x 7'9"

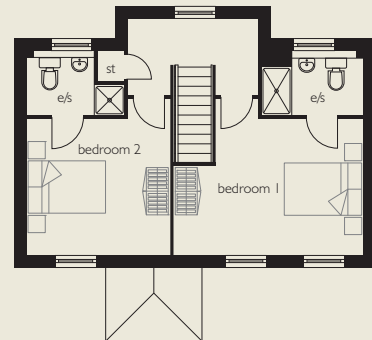
The B

2 bedroom house
PLOT 59



GROUND FLOOR

Kitchen/Dining Area	3.487m x 3.252m	11'5" x 10'8"
Living Room	4.960m x 3.584m	16'3" x 11'9"



FIRST FLOOR

Bedroom 1	4.624m x 3.309m	15'2" x 10'10"
Bedroom 2	3.487m x 3.309m	11'5" x 10'10"

boiler cupboard fridge/freezer space e/s en suite clks cloakroom

Some items shown in this key may be subject to change, and positions could vary from those indicated on this floorplan. Please refer to Sales Advisor for details of your selected plot.

All dimensions are measured to the extents of the available living space, and should not be used for carpet sizes, appliance spaces or furniture. Furniture not to scale and all positions are indicative. Wardrobes are shown to suggest position only, and are not included as standard unless otherwise stated. We operate a policy of continuous improvement and individual features such as kitchen and bathroom layouts, doors, windows, garages and elevational treatments may vary from time to time. Consequently these particulars should be treated as general guidance only and do not constitute a contract, part of a contract or a warranty.