

The Hornbeam

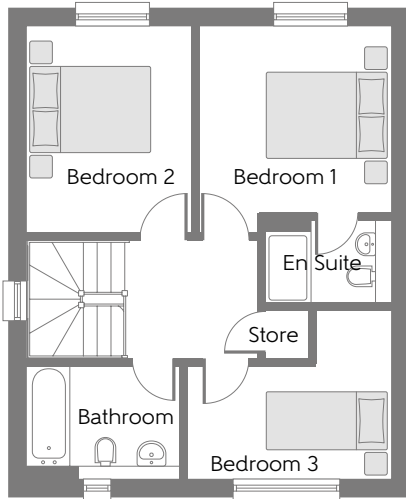
Three bedroom home



Bellway Homes (North East Division)
Bellway House, Kings Park, Kingsway North,
Gateshead, Tyne and Wear NE11 0JH

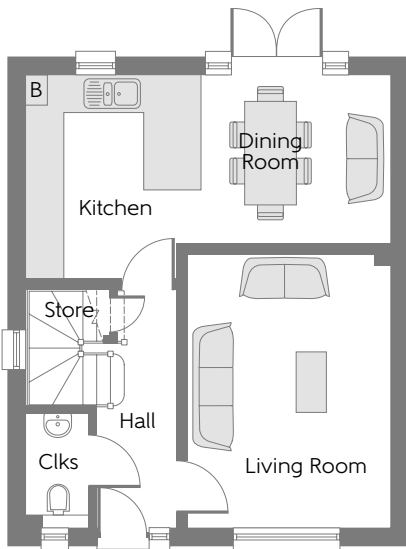
Telephone: 0191 482 8800
Fax: 0191 491 4537
www.bellway.co.uk

Bellway



First Floor

Bedroom 1	3.427m (max)	x 3.167m	11'3" (max)	x 10'5"
Bedroom 2	3.427m	x 2.725m	11'3"	x 8'11"
Bedroom 3	3.390m	x 2.782m (max)	11'2" (max)	x 9'2" (max)



Ground Floor

Kitchen	3.367m	x 2.890m	11'1"	x 9'6"
Dining Room	3.090m	x 2.760m	10'2"	x 9'1"
Living Room	4.540m	x 3.340m	14'11"	x 11'0"

B Boiler **Clks** Cloakroom

Some items shown in this key may be subject to change, and positions could vary from those indicated on this floorplan. Please refer to Sales Advisor for details of your selected plot. Computer generated image shown overleaf. External finishes, landscaping and configuration may vary from plot to plot. Please refer to Sales Advisor for further details. All dimensions are approximate and should not be used for carpet sizes, appliance spaces, or furniture. Furniture not to scale and all positions are indicative. We operate a policy of continuous improvement and individual features such as kitchen and bathroom layouts, doors, windows, garages and elevational treatments may vary from time to time. Consequently these particulars should be treated as general guidance only and do not constitute a contract, part of a contract or a warranty. 177045/06/18. The Hornbeam.